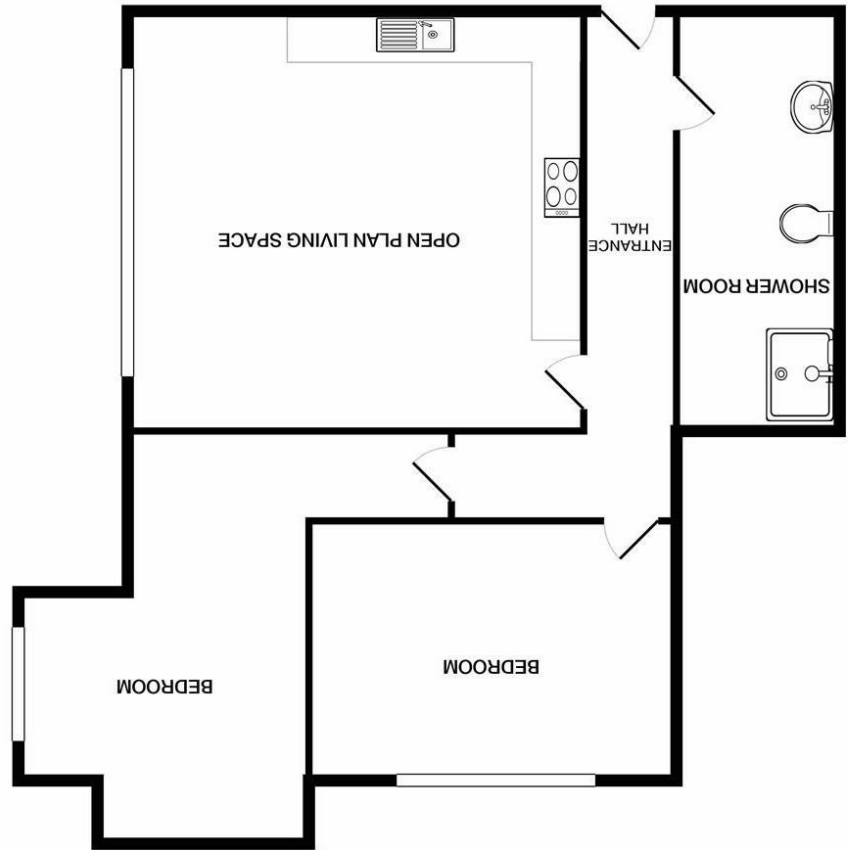


Made with Metropix ©2020
 Whilst every attempt has been made to ensure the accuracy of the floor plan contained here, measurements of doors, windows, rooms and any other items are approximate and no responsibility is taken for any error, omission, or mis-statement. This plan is for illustrative purposes only and should be used as such by any prospective purchaser. The services, systems and appliances shown have not been tested and no guarantee as to their operability or efficiency can be given



Disclaimer - In accordance with the Property Misdescriptions Act, the company gives notice that all descriptions, references to condition, necessary permissions for use and other details are given in good faith and believed to be correct, but any intending lessees do not rely on them as statements of fact, but must satisfy themselves by inspection or other means, as to their accuracy.

England & Wales	
EU Directive 2002/91/EC	
Very energy efficient - lower running costs	(92 plus) A
	(81-91) B
	(69-80) C
	(55-68) D
	(39-54) E
	(21-38) F
Not energy efficient - higher running costs	(1-20) G
Current	Potential

Energy Efficiency Rating



Norfolk Property online.

Surrey Street | Norwich | NR1
 Guide price £200,000

**Norfolk Property
online.**

Norfolk Property Online presents this spacious, ground floor, two bedroom apartment with a secure underground car parking space in the popular Sentinel House development. The apartment features a generous entrance hall, large shower room, a sleek open plan kitchen living space and two double bedrooms. Residents enjoy a well equipped 24/7 gym, a residents lounge and concierge service. Boasting a much sought after location within Norwich city centre with an excellent range of shops, bars and restaurants just moments away.

